

Bealeton Series Stainless Steel Sinks



Product Features

- Available in 18 and 20 gauge stainless steel
- Self-rimming
- Available with 1, 3 or 4 faucet holes
- Sink clips included
- Overall size: 32-15/16" x 22" (18 gauge), 32-15/16" x 22-1/16" (20 gauge)
- Bowl size: 29-7/16" x 16-1/4"
- Bowl depth: 8" (18 gauge), 6" (20 gauge)
- Drain deameter: 3-1/2"
- Under spray coating and pads for sound deadening and insulation



PFSR1B332284

Part numbers:

18 Gauge:

PFSR1B332281	32-15/16" x 22" 1H 8" 18GA 1 B SS SINK
PFSR1B332283	32-15/16" x 22" 3H 8" 18GA 1 B SS SINK
PFSR1B332284	32-15/16" X 22" 4H 8" 18GA 1 B SS SINK

20 Gauge:

PFSR1B332261	32-15/16" x 22-1/16" 1H 6" 20GA 1B SS SINK
PFSR1B332263	32-15/16" x 22-1/16" 3H 6" 20GA 1B SS SINK
PFSR1B332264	32-15/16" x 22-1/16" 4H 6" 20GA 1B SS SINK

*6" deep bowls can be installed to meet ADA guidelines

Warranty and Codes

This PROFLO stainless steel sink carries a limited lifetime warranty. In an effort to continually improve our products, we will make design changes from time to time. We reserve the right to ship newly designed product to fill any order unless it is agreed to in writing to do otherwise.

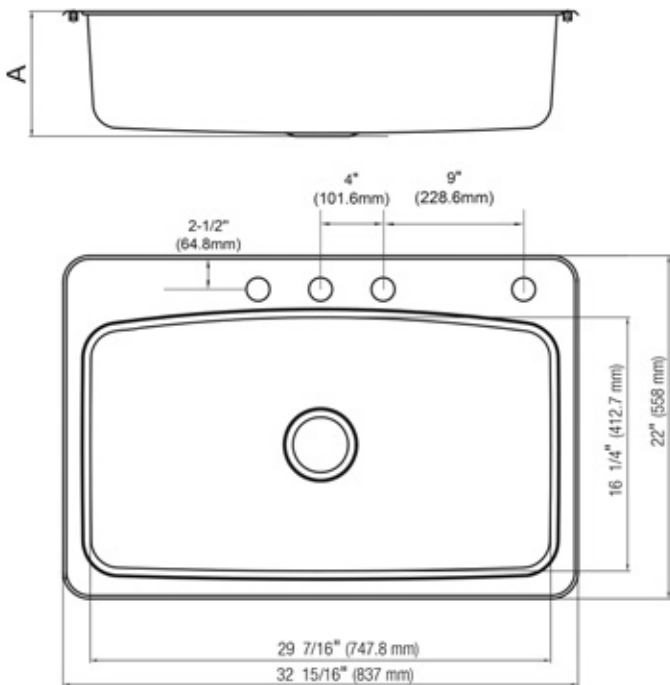
These products meet or exceed ASME/ANSI A112.19.3m.





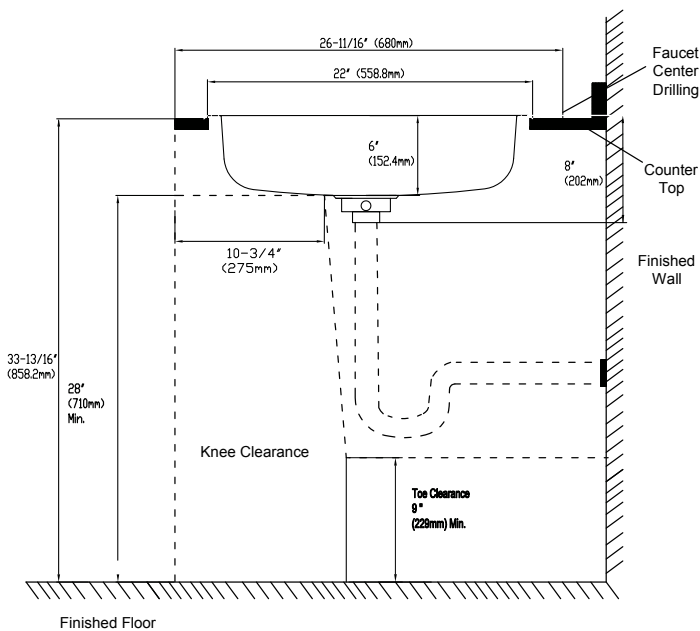
Bealeton Series Stainless Steel Sinks

Product Specifications



Specified Models

	Sink Height	SKUs
A	6" (152.5mm)	PFSR1B332261 PFSR1B332263 PFSR1B332264
	8" (203.2mm)	PFSR1B332281 PFSR1B332283 PFSR1B332284



* All measurements are nominal. Please verify before actual installation.

